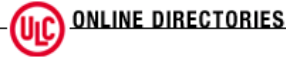


7.2.3 – UL FIRE RESISTANCE RATING (CAN)



BXUVC.W017 Fire Resistance Ratings

[Page Bottom](#)

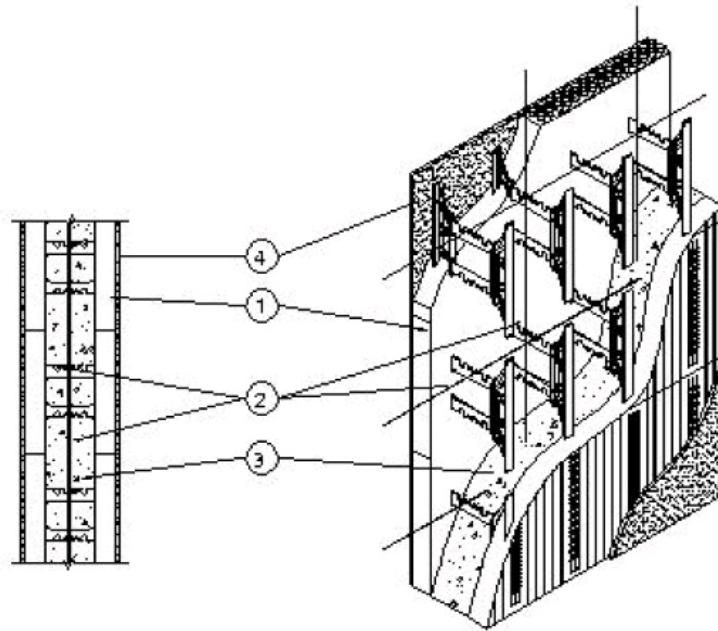
Fire Resistance Ratings

[See General Information for Fire Resistance Ratings](#)

Design No. W017

July 06, 2007

Assembly Rating - 2, 3 or 4 h (See item 1)



Bearing Wall

1. **Insulated Concrete Forms** — CDELC (Guide No. 40 U18.45). Standard form units comprised of two 1220 mm by 406 mm by 70 mm thick expanded polystyrene (EPS) panels linked by polypropylene webs at 200 mm OC. The minimum width of the ICF cavity is 102 mm as shown in the table below. Height adjusters consist of 610 mm long, 102 mm high and 70 mm thick flat EPS panels. End caps vary with wall thickness from 102 mm to 250 mm wide, 406 mm high and 57 mm thick flat EPS panels. Assembly ratings depend on width of ICF cavity as shown in table below:

Assembly Rating, h	Min ICF Cavity Thickness, mm
2	102
3	159
4	203

7.2.3 – UL FIRE RESISTANCE RATING (CAN)

CONTINUED

BXUVC.W017 - Fire Resistance Ratings

<http://database.ul.com/cgi-bin/XYV/template/LISCANADA/1FRAME/...>

LOGIX INSULATED CONCRETE FORMS LTD

2. **Reinforcing Steel** — 10M reinforcing bars inserted horizontally into each ICF course within polypropylene web notches. Reinforcing bars placed vertically at 400 mm OC into centre of ICFs.

3. **Sand-Limestone Concrete** — 2300 ± 50 kg/m³ density, 20 MPa nominal compressive strength.

4. **Gypsum Wallboard** — 12.7 mm thick, 7.5 kg/m² minimum, 1220 mm wide gypsum wallboard fastened to flanges of polypropylene webs with 50 mm long drywall screws at 406 mm OC vertically and horizontally. Joints covered with joint compound, covered with joint tape, and covered with an additional coat of joint compound. Screwheads covered with joint compound.

Last Updated on 2007-07-06

[Questions?](#)

[Notice of Disclaimer](#)

[Page Top](#)

Copyright © 2007 Underwriters' Laboratories of Canada®

The appearance of a company's name or product in this database does not in itself assure that products so identified have been manufactured under ULC's Follow-Up Service. Only those products bearing the ULC Mark should be considered to be Listed and covered under ULC's Follow-Up Service. Always look for the Mark on the product.

ULC permits the reproduction of the material contained in the Online Certification Directory subject to the following conditions: 1. The Guide Information, Designs and/or Listings (files) must be presented in their entirety and in a non-misleading manner, without any manipulation of the data (or drawings). 2. The statement "Reprinted from the Online Certifications Directory with permission from Underwriters Laboratories' of Canada" must appear adjacent to the extracted material. In addition, the reprinted material must include a copyright notice in the following format: "Copyright © 2007 Underwriters Laboratories' of Canada®"

An independent organization working for a safer world with integrity, precision and knowledge.



EVALUATION REPORTS

2 of 2

07/16/2007 1:53 PM

www.logixicf.com

Good. Solid. Green.™

7 – 64



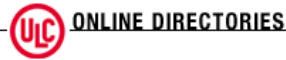
Rev. Sep 23/09

7.2.3 – UL FIRE RESISTANCE RATING (CAN)

CONTINUED

BXUVC.W018 - Fire Resistance Ratings

<http://database.ul.com/cgi-bin/XYV/template/LISCANADA/IFRAME/...>



BXUVC.W018 Fire Resistance Ratings

[Page Bottom](#)

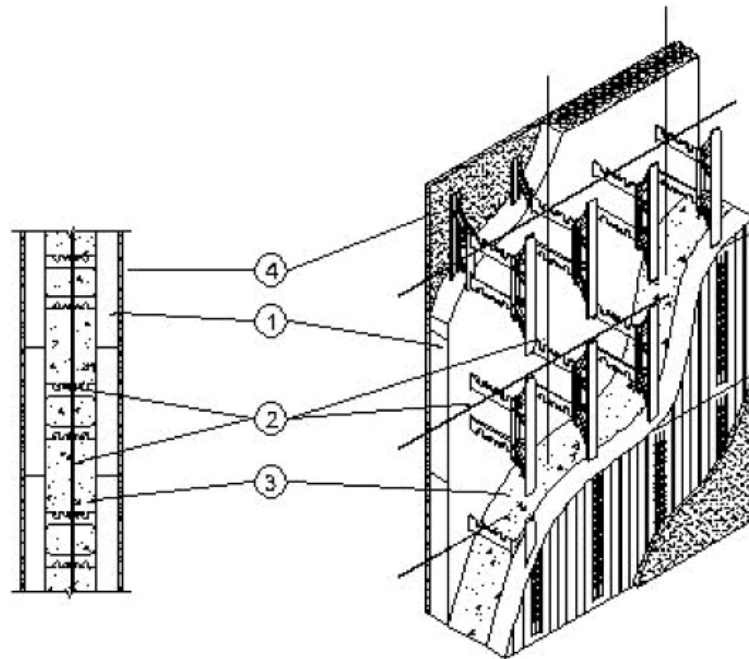
Fire Resistance Ratings

[See General Information for Fire Resistance Ratings](#)

Design No. W018

July 06, 2007

Assembly Rating - 4 Hr



Bearing Wall

1. **Insulated Concrete Forms** — CDELC (Guide No. 40 U18.45). Standard form units comprised of two 1220 by 406 mm by 70 mm thick expanded polystyrene (EPS) panels linked by polypropylene webs at 200 mm OC. The minimum width of the ICF cavity is 159 mm. Height adjusters consist of 610 mm long, 102 mm high and 70 mm thick flat EPS panels. End caps vary with wall thickness from 102 mm to 250 mm wide, 406 mm high and 57 mm thick flat EPS panels.

LOGIX INSULATED CONCRETE FORMS LTD

2. **Reinforcing Steel** — 10M reinforcing bars inserted horizontally into each ICF course within polypropylene web notches. Reinforcing bars placed vertically at 400 mm OC into centre of ICFs.

3. **Sand-Limestone Concrete** — 2300 ± 50 kg/m³ density, 20 MPa nominal compressive strength.

7.2.3 – UL FIRE RESISTANCE RATING (CAN)

CONTINUED

BXUVC.W018 - Fire Resistance Ratings

<http://database.ul.com/cgi-bin/XYV/template/LISCANADA/IFRAME/...>

- **4. Gypsum Board** — CKNXC (Guide 40 U18.23). Minimum 15.9 mm thick, 1220 mm wide gypsum wallboard fastened to flanges of polypropylene webs with 50 mm long drywall screws at 406 mm OC vertically and horizontally. Joints covered with joint compound, covered with joint tape, and covered with an additional coat of joint compound. Screwheads covered with joint compound. See ULC List of Equipment and Materials, Fire Resistance for names of manufacturers.

CGC INC

CERTAINTEEED GYPSUM CANADA INC

G-P GYPSUM CORP, SUB OF

GEORGIA-PACIFIC CORP

LAFARGE NORTH AMERICA INC

Last Updated on 2007-07-06

[Questions?](#)

[Notice of Disclaimer](#)

[Page Top](#)

[Copyright © 2007 Underwriters' Laboratories of Canada®](#)

The appearance of a company's name or product in this database does not in itself assure that products so identified have been manufactured under ULC's Follow-Up Service. Only those products bearing the ULC Mark should be considered to be Listed and covered under ULC's Follow-Up Service. Always look for the Mark on the product.

ULC permits the reproduction of the material contained in the Online Certification Directory subject to the following conditions: 1. The Guide Information, Designs and/or Listings (files) must be presented in their entirety and in a non-misleading manner, without any manipulation of the data (or drawings). 2. The statement "Reprinted from the Online Certifications Directory with permission from Underwriters Laboratories' of Canada" must appear adjacent to the extracted material. In addition, the reprinted material must include a copyright notice in the following format: "Copyright © 2007 Underwriters Laboratories' of Canada®"

An independent organization working for a safer world with integrity, precision and knowledge.

